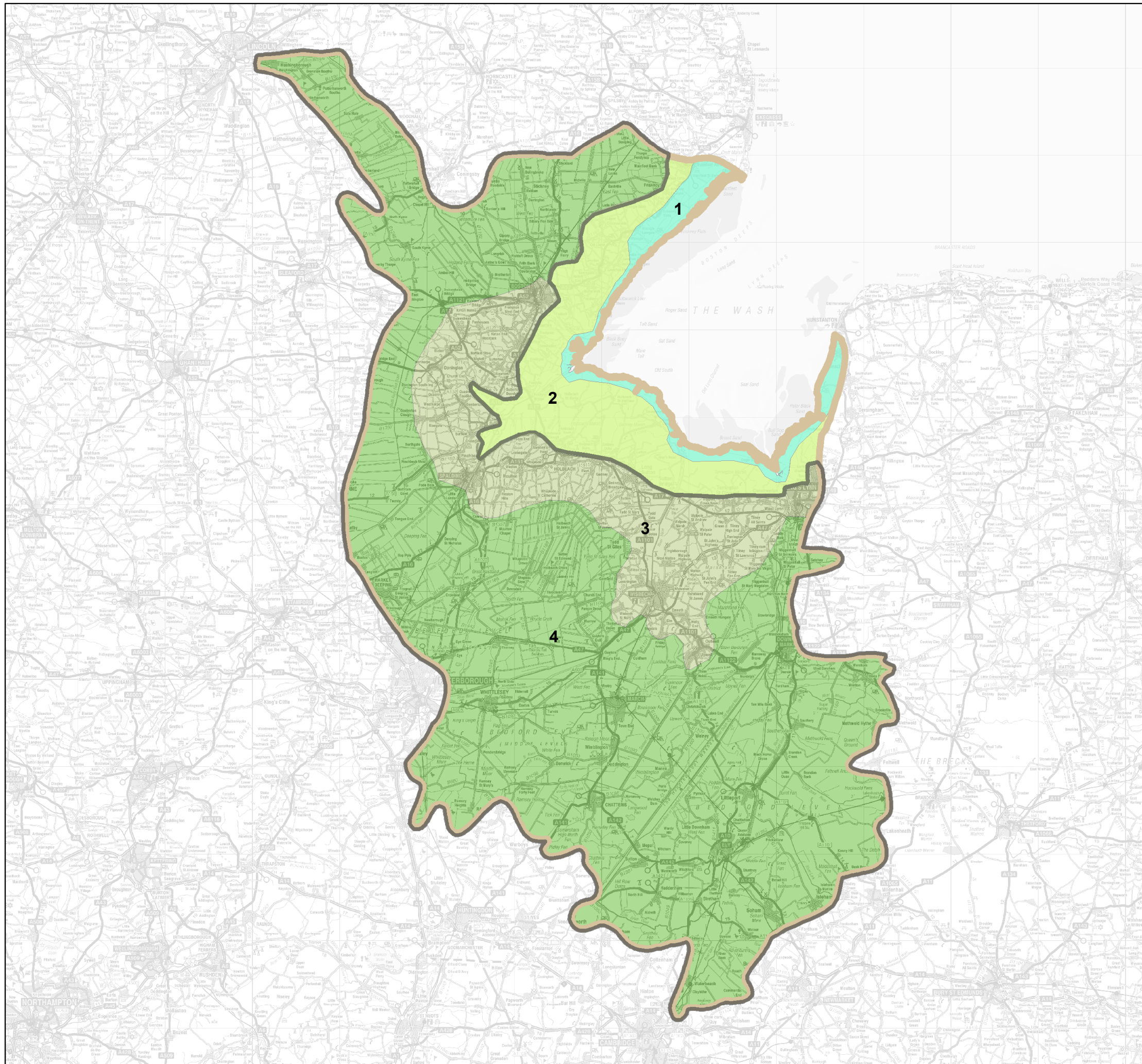



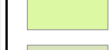
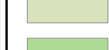



# Fens for the Future

## A Strategic Plan for Fenland : A Proposal for an Enhanced Ecological Network

Map 1. Plan boundary comprising the Settled Inland Fens and the Open Inland Fens:  
derived from the Fens Joint Character Area  
Assessment



-  Plan boundary
-  The Fens National Character Area (simplified)
-  1. Open coastal marshes
-  2. Drained coastal marshes
-  3. Settled inland fens
-  4. Open inland fens

0 5 10 20 Km

Map Reference - NE140804-1328-789

Mapped by - Carrie Mackay-Payne (2014)

GI and Analysis Team, Natural England

© Crown copyright and database right [2014]

Ordnance Survey Licence number 100022021.