

Dear Partners,

Many thanks again for joining the partnership.

It's been a busy few months since the NRN Delivery Partnership was [launched](#) in November and over three hundred organisations have signed up within this time; the Nature Recovery Network is in an early phase and the partnership itself is evolving. The Partnership will help to facilitate local action for nature as a contribution to a national NRN.

This update will briefly summarise some of the ongoing work and planning around the NRN and highlight some important upcoming milestones.

During our most recent NRN Delivery Partnership Management Group meeting on the 9th of February we discussed some key delivery mechanisms for the Nature Recovery Network, focusing on the new Environmental Land Management scheme. We also discussed monitoring and evaluation and our long-term Partnership Plan.

These work areas are in an early stage and we brought these to the NRN Partnership Management Group to inform and help shape their development.

## The NRN Partnership Management Group Meeting

### The Nature Recovery Management Group

The management group ([listed here](#)) comprises of a range of government and sector representatives. We convene every two months to provide a platform for collaboration that helps to inform the development and implementation of the NRN.

### The NRN Partnership Plan

The NRN is a major commitment in the [government's 25 Year Environment Plan](#) and part of the forthcoming Nature Strategy. It provides an opportunity to think and to act long term for nature recovery.

Working together is essential to deliver the NRN. We will work in partnership with organisations and across sectors, sharing skills, knowledge and resources, to help achieve the objectives of the NRN. We have set up the NRN Delivery Partnership to support collaboration.

In the coming months we will be working with the Management Group and the wider partnership to develop a long-term partnership plan. This will describe what we will do together to deliver the NRN, what our collective priorities are and how to make best use of partner contributions. We will publish a roadmap with key milestones and stages outlining how different elements knit together.

The plan will pay particular focus to the next five years. This period will be characterised by both delivery (building on what some partners have already begun) as well as trialling (such as Environmental Land Management Schemes and Local Nature Recovery Strategies). There will be a priority shift beyond this point where we move towards 'rollout'. The partnership will be able to influence both the planning and the delivery as we take the NRN forwards.

# Environmental Land Management Schemes

In the coming years farmers in England will see the current Basic Payment Scheme slowly phased out and replaced by the new Environmental Land Management Scheme (E.L.M.S), through which farmers and land managers will receive payment for public goods, including actions to deliver thriving plants and wildlife.

There will be three components to E.L.M.S, which have been aligned to incentivise nature recovery at different scales.

1. Sustainable farming Incentives
2. Local Nature Recovery
3. Landscape Recovery

As part of the Government's [ten-point plan](#) announcement in November 2020, 10 "Landscape Recovery" projects (under component 3) will be launched across England over the next four years to restore peatlands, woodlands and create wilder landscapes.

These projects will help restore the equivalent of over 30,000 football pitches of wildlife rich habitat, whilst also serving as pilot projects for future nature recovery areas.

Landscape Recovery will support the delivery of landscape and ecosystem recovery at scale through long-term, transformative land use change projects, including projects to restore wilder landscapes in places where that is appropriate.

Projects should be typically 2,000ha to 3,000ha in size (though we are open to projects which fall slightly outside of this range).

Further information on participating in Landscape Recovery trials can be found [here](#).

Closing date: 30 April 2021

# Monitoring & evaluating the NRN

Monitoring and evaluation will be crucial in demonstrating progress towards delivering the NRN and identifying where improvement is needed. Over the next year, we will be focused to three key work strands:

1. Components and characteristics: To provide a fuller narrative description of the NRN, its component parts (for example, protected sites, wildlife rich habitats) and their desired characteristics.
2. Developing an Evaluation framework: To evaluate the success of key delivery mechanisms (such as Local Nature Recovery Strategies and other supportive strategies) to ensure that they successfully align and work together to deliver the NRN.
3. Monitoring and data framework: To begin to identify the data requirements, standards and processes for monitoring NRN delivery at different scales.

Together, with partner collaboration, these strands will feed into a robust monitoring strategy that will guide and measure the success of the network.

---

## Other Updates

### Funding Opportunities

We aim to keep you updated on funding opportunities, as and when they become available.

### Peat Capital Grant Scheme

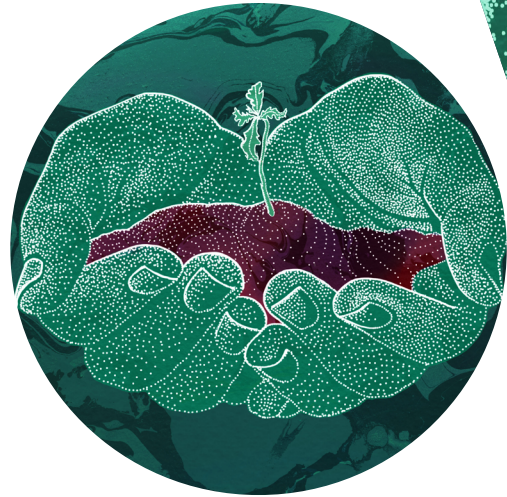
Following the announcement in 2020 of future funding for peatland restoration under the Defra Nature for Climate fund, Natural England wanted to give you early notice that there will be specific announcement in the Spring to support further restoration activity. Over February and March, Natural England's Peat Capital Grant Scheme team will be developing this peatland aspect of the Defra Nature for Climate fund, with the aim of launching a competitive grant scheme around mid-April. We are looking to build on the lessons of the previous peatland capital grant scheme and how we can use it to further leverage private finance.

If you would like to be informed of future briefings regarding the Peat Capital Grant Scheme please email us at [PCGS@naturalengland.org.uk](mailto:PCGS@naturalengland.org.uk) to be added to the scheme's mailing list.



## Green Recovery Challenge Fund

Following the success of the first round of the Green Recovery Challenge Fund (GRCF), the Government has confirmed that it will double the size of the fund by making an additional £40 million investment, bringing the total to £80m. The GRCF has kick-started a pipeline of nature-based projects to restore nature, tackle climate change and connect people with the natural environment. The fund will also provide rapid investment in the environmental NGO sector to help maintain and create new jobs. The second round of the Green Recovery Challenge Fund is set to launch in due course. Further information on the application process and eligibility criteria will be published on the National Lottery Heritage Fund's [website](#) in the coming weeks.



## Encourage others to join!

- You are signing up to a unique collaboration, supported by government policy which will empower partners to make a key difference for nature recovery.
- You will be provided with a platform to help shape our priorities and approach in delivering nature recovery.
- You will receive updates on relevant policy developments and projects.
- You will receive invites to informative events throughout the year and the next one is taking place the end of March. It will provide more detail on how the key components and delivery of the NRN (planning, partnership working, integration of policies and funding) will operate and combine to deliver nature recovery.
- You will join a collective movement and will receive guidance and support.

Our next management group meeting will mid-April, when it may very well be a warm spring day. We will send an NRN update shortly after.

Please get in touch if you have any queries or would like to discuss any of this.

[NDPNatureRecovery@naturalengland.org.uk](mailto:NDPNatureRecovery@naturalengland.org.uk)

## Upcoming workshop

March the 25th from 14:00 – 16:00

We will provide an update on how the NRN is developing with a workshop.

This will focus on how the NRN will be delivered through:

1. Spatial planning: Local Nature Recovery Strategies
2. Collaboration: cross-sectoral partnership working
3. Integration of policy and funding opportunities

This will be hosted through Zoom, and registration will be required.

Invites and an agenda will be sent soon.