



**middle level  
commissioners**



# **Water Resources In The Fens**

**David Thomas**

Chief Executive, The Middle Level Commissioners

**Robin Price**

Managing Director, Water Resources East

# Water Resources East

## A MULTI-SECTOR, REGIONAL SCALE PLANNING PROBLEM

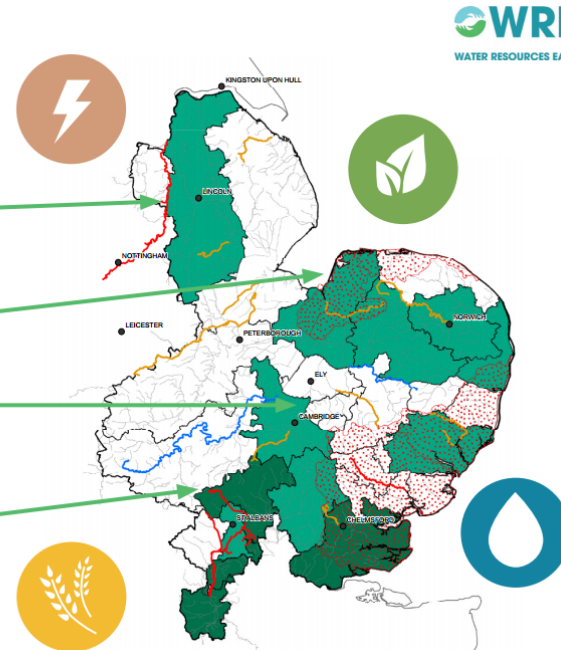
By the 2060's, the gap between the supply and demand for water will be at least 750Ml/d. In the more severe scenarios that have been modelled, it is bigger. These estimates assume that levels of household demand are sustainable.

In scenarios with uncontrolled household demand there is widespread, catastrophic, failure of the WRE water resource and water supply systems.

Power and public water supply vulnerabilities combine on the Trent

Public water supply, agriculture and environmental vulnerabilities combine in North Norfolk, Suffolk and Essex

Public water supply and environmental vulnerabilities combine in Cambridgeshire, the Vale of St Albans and the southern Chilterns



WRE  
WATER RESOURCES EAST

love every drop.  
anglianwater

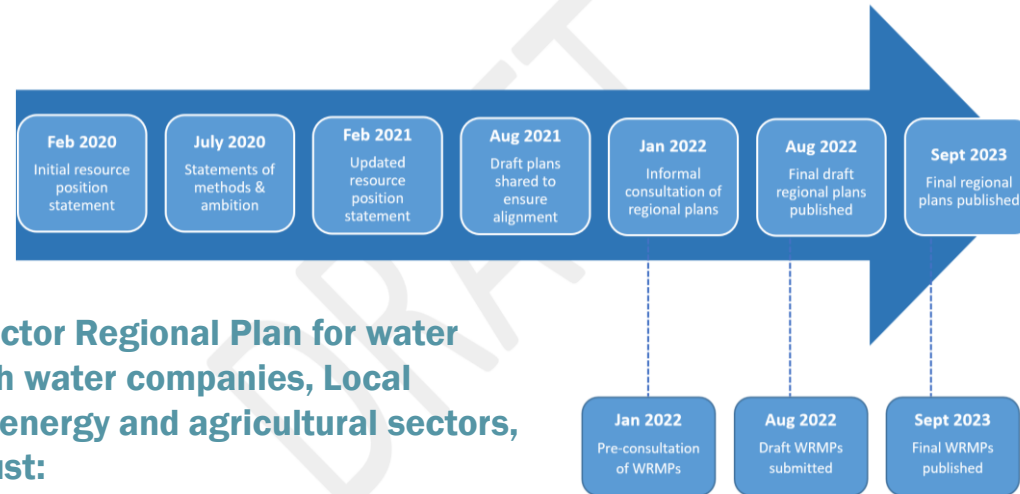
### WRE's four-part strategy, published in 2018:

- Increase water efficiency across all sectors who use water
- Capture and store more water – both at farm and landscape scale
- Transfer water from areas of surplus to areas of need, using open water channels as well as pipes
- Continue to look at alternative sources of water, for example desalination and water re-use

# What does WRE need to achieve?



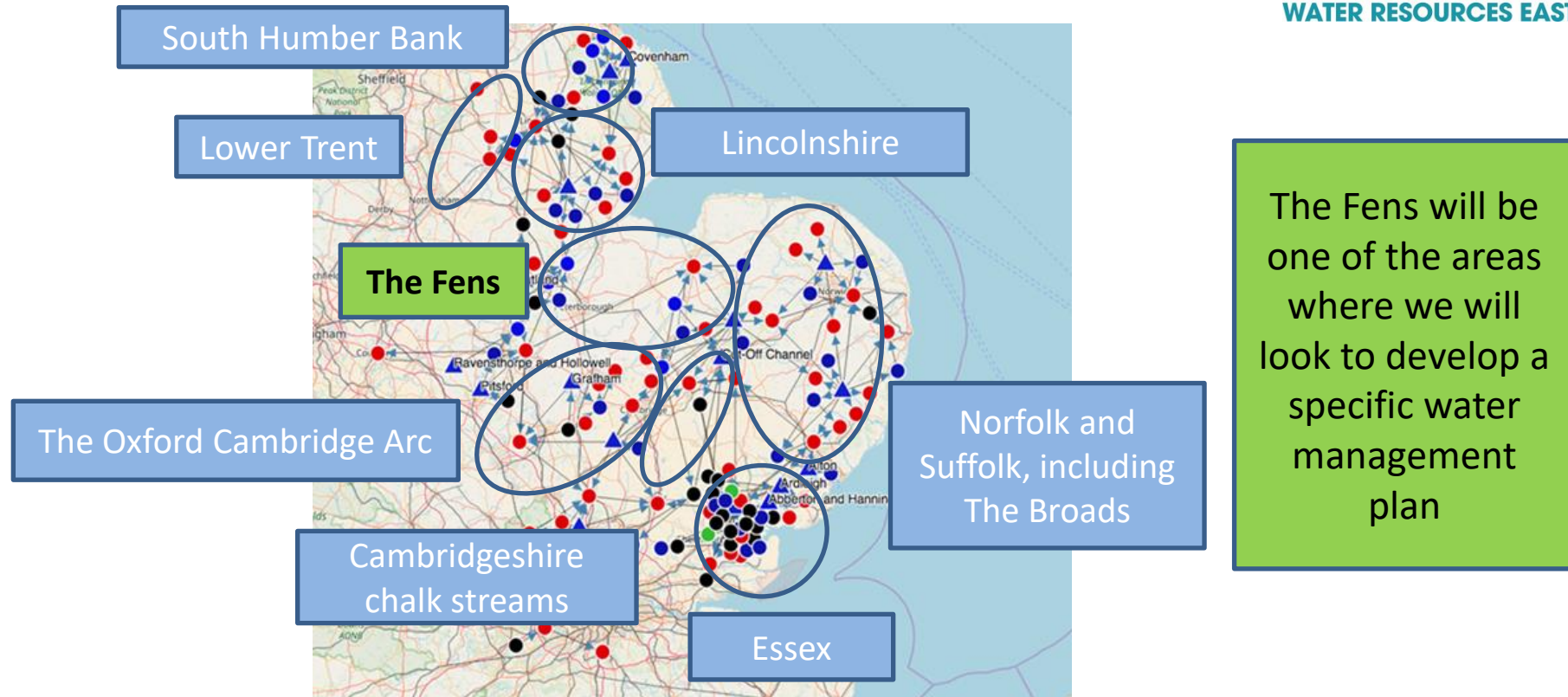
Securing Long Term Resilience  
National Framework and Regional Groups



In August 2022, we must publish a single, multi-sector Regional Plan for water management across Eastern England, working with water companies, Local Authorities and Local Enterprise Partnerships, the energy and agricultural sectors, landowners and environmental NGOs. The plan must:

- **Seek to increase the level of resilience for water resources for all sectors.**
- **Identify opportunities to deliver wider benefits in terms of flood risk and water quality.**
- **Ensure that water (either too much or not enough) is not a barrier to economic development in the region.**
- **Enhance the environment.**
- **Feed directly into water company Water Resource Management Plans.**

## Our region is very diverse in terms of water issues

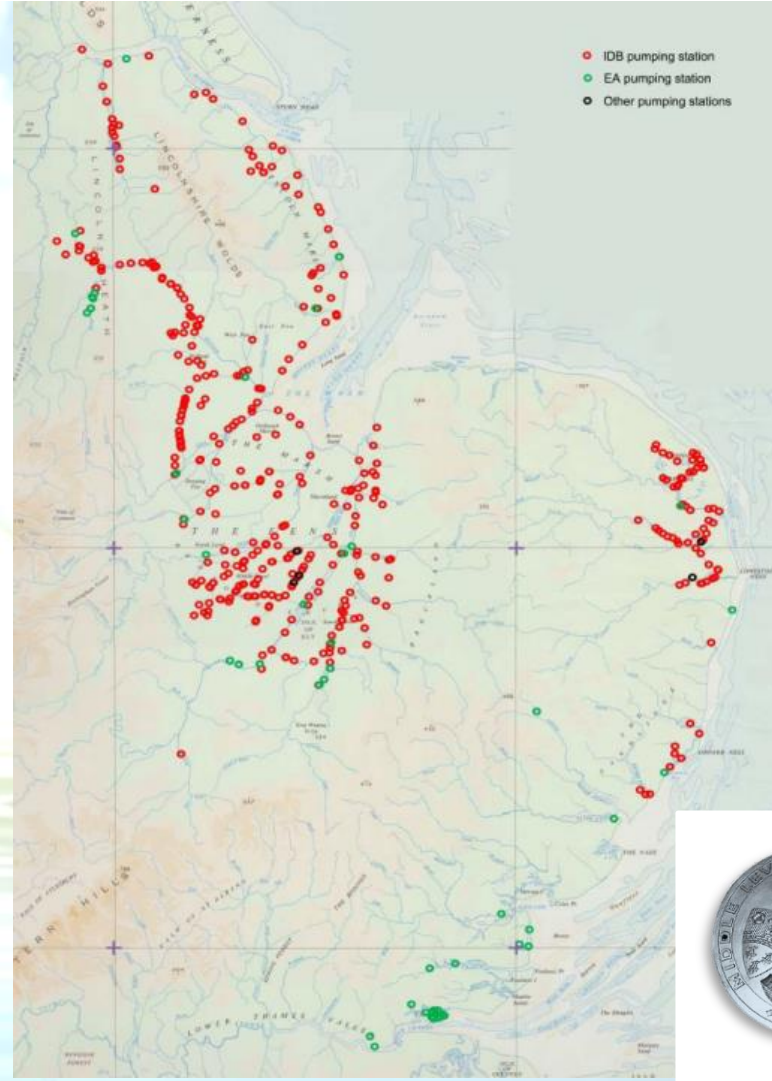


The Fens will be one of the areas where we will look to develop a specific water management plan

**There are over 500 pumping stations managed by IDBs in England**

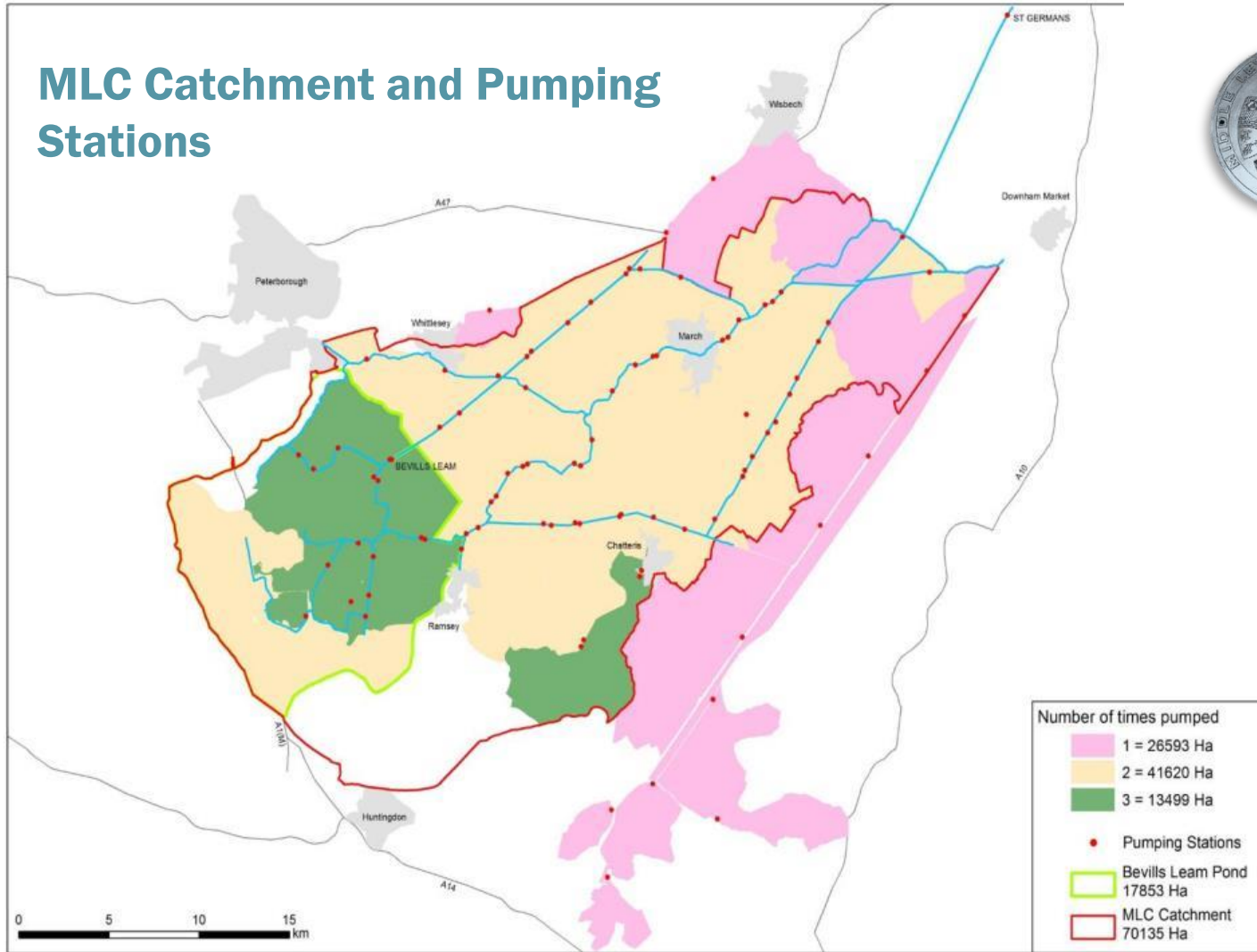
**The red dots depict those serving East Anglia and Lincolnshire managed by IDBs**

**Balancing efficiency, water need, biodiversity and dependability is a perennial challenge for pumped catchment FRMAs**



**middle level  
commissioners**

# MLC Catchment and Pumping Stations



**middle level  
commissioners**

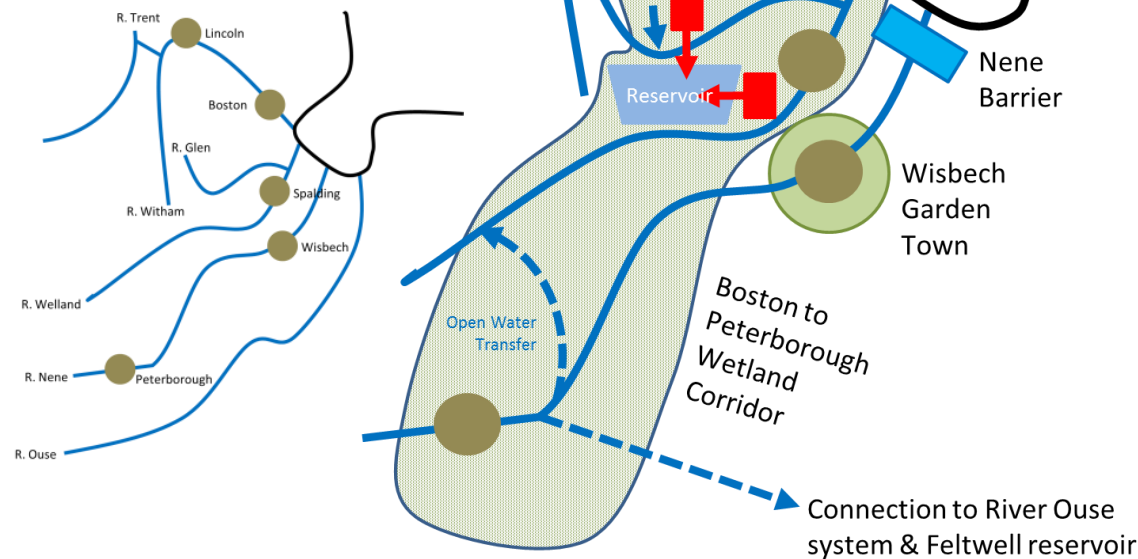
# WRE's vision for future Fens water management

An Integrated Water Resource Management (IWRM) concept based on the Fenland rivers



WATER RESOURCES EAST

## Key: Fenland Towns & Rivers



## Drought resilience & operational flexibility

A new reservoir, supported by flows in five catchments instead of two

## Reduced flood risk

New open water transfers will function as flood relief channels for Spalding, Boston, Wisbech & related IDBs

## The environment of the Fens

Assets will be designed for conservation and restoration of fenland habitats, maximising carbon sequestration opportunities

## Farming and food

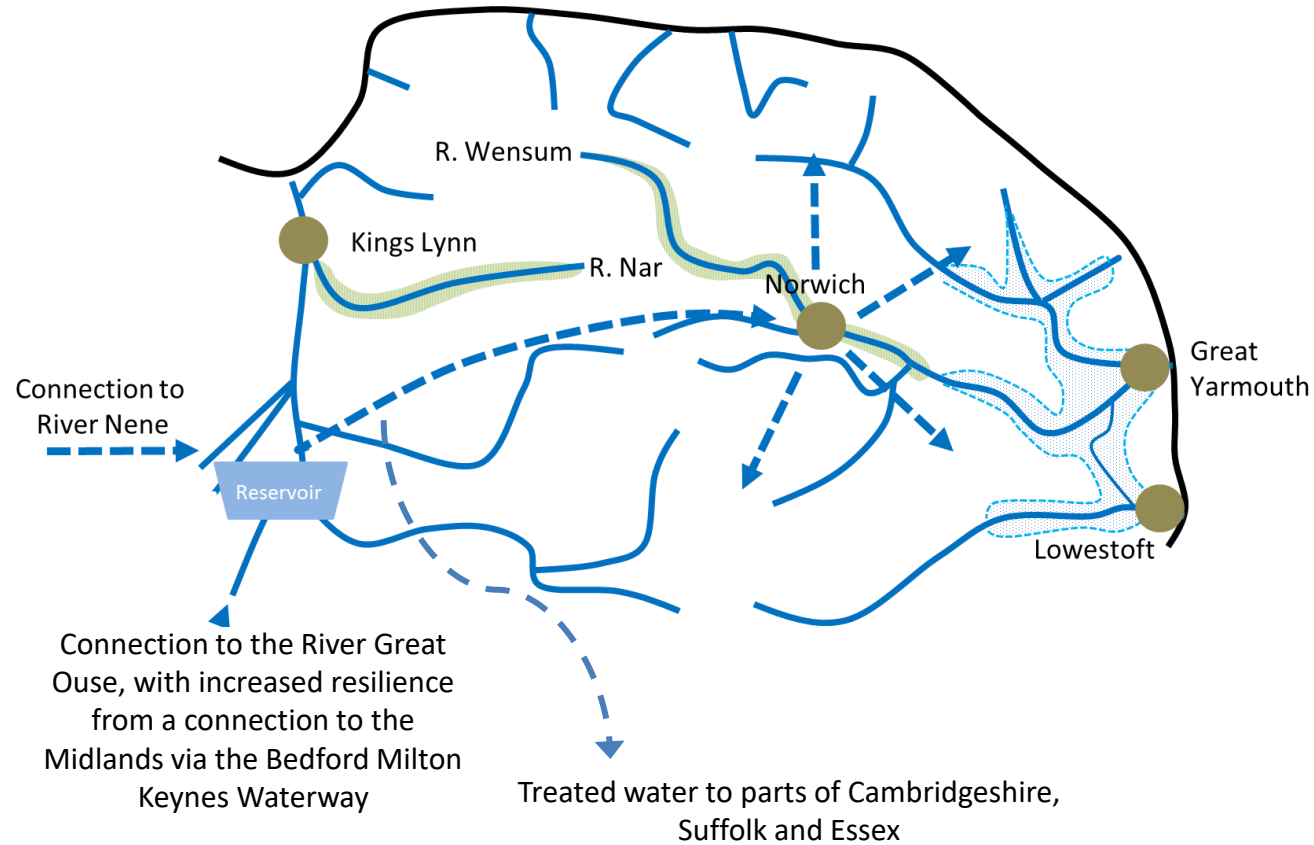
New flood storage reservoirs & open water transfers will capture and store water for irrigated agriculture

## Regeneration & the visitor economy

Tidal barriers & water level control will enhance navigation and enable sustainable development in Wisbech and other Fenland towns

Find out more at [waterresourceeast.com](http://waterresourceeast.com)

# We might need a second reservoir in the Fens too...





# We want to play in role in key strategies

## WISBECH 2020



Ministry of Housing,  
Communities &  
Local Government  
The Oxford-Cambridge Arc



EASTERN  
AGRI  
TECH



**Delivering for Britain**

Food and farming in the Fens



agenda



Environment  
Agency

Great Ouse Flood Storage and Flow Conveyance Study workshop  
Tuesday 21st January 2020

**DRAFT  
Climate Change  
and  
Environment Strategy**

**2020 - 2025**  
Draft version for publication 20 December 2019

Natural Cambridgeshire is the Local Nature Partnership for Cambridgeshire and Peterborough.

Natural Cambridgeshire is a partnership of leaders from business, local authorities, the health sector, learning, skills and environmental organisations that exists to champion, influence and enable the fulfilment of the vision. A partnership whose plan is being developed to achieve the ambition of doubling nature and cultural green space across Cambridgeshire and Peterborough.

Natural Cambridgeshire putting nature at the heart

We can make about the best of natural Cambridgeshire in support of creating a better natural environment. Please contact info@naturalcambridgeshire.org.uk or www.naturalcambridgeshire.org.uk

**Doubling Nature**  
A Vision for the Natural Future of Cambridgeshire & Peterborough in 2050

Supported by partners of the Great Ouse Flood Storage and Flow Conveyance Study

**Join the Vision:**

**A UNESCO Fens Biosphere**

Messing about with the river: water firms accused of draining the Cam dry



## Mayoral Combined Authority unanimously approves independent Commission on Climate Change

29 November 2019



Bedfordshire  
Cambridgeshire  
Northamptonshire

# WRE is an independent, collaborative membership organisation – come join us!



The collage features logos for the following organizations:

- love every drop. anglianwater
- CAMBRIDGE WATER COMPANY
- Affinity Water: Your local supply, on tap
- Lincolnshire COUNTY COUNCIL
- Suffolk County Council
- WRE WATER RESOURCES EAST
- NORTH NORFOLK DISTRICT COUNCIL
- Norfolk County Council
- Borough Council of King's Lynn & West Norfolk
- Breckland Council
- SEVERN TRENT
- ESSEX & SUFFOLK WATER living water
- East Suffolk Drainage Board
- South Holland Drainage Board
- Broads Authority
- University of Suffolk
- Suffolk New College
- RWE UK
- Energy
- Waterway Park
- ada Representing Drainage Water Level & Flood Risk Management Authorities
- NEWANGLIA Local Enterprise Partnership for Norfolk and Suffolk
- University of East Anglia
- UEA University of East Anglia
- edfENERGY
- BRCC
- Water Management Alliance
- Norfolk Rivers Drainage Board
- University of Lincoln
- Cranfield University
- Cambridgeshire ACRE Working to strengthen local communities
- Broads Drainage Board
- Water Management Alliance
- Norfolk Rivers Drainage Board
- NORTH LEVEL DISTRICT INTERNAL DRAINAGE BOARD
- Forestry Commission
- Environment Agency
- Department for Environment Food & Rural Affairs
- NATURAL ENGLAND
- CAN Community Action Norfolk
- CPRE Campaign to Protect Rural England Standing up for your countryside
- Black Sluice Internal Drainage Board
- King's Lynn Drainage Board
- NFU
- CLA
- The Nature Conservancy
- WildAnglia Nature is our business
- rspb
- H & J Nevile & Son
- IRRIGATION IN UK
- BAWAG
- SOMELCO
- ANGLING TRUST
- NORFOLK RIVERS TRUST
- NORFOLK FWAG CONSERVATION ON FARMLANDS
- T.W. Page & son ltd
- East Suffolk Water Abstractors Group (ESWAG)
- WOODLAND TRUST
- FISH LOCAL
- Essex and Suffolk Rivers Trust
- FeCRA – The Federation of Cambridge Residents' Associations
- BROWN & CO
- Thetford River Group
- waterwise RWC TITTLISHALL LIMITED
- BEDFORD GROUP OF INTERNAL DRAINAGE BOARDS Managers of the local water environment

# To find out more.....



**Water Resources East**  
277 Tweets



**Water Resources East**  
@WaterREast

Water Resources East is pioneering an innovative, collaborative approach to resilient water management in Eastern England.

📍 Peterborough 🌐 [waterresourceeast.com](http://waterresourceeast.com) 📅 Joined March 2019

228 Following 406 Followers

[Edit profile](#)

E-mail  
[contact@wre.org.uk](mailto:contact@wre.org.uk) or  
[robinprice@wre.org.uk](mailto:robinprice@wre.org.uk)

Google



**WRE**  
WATER RESOURCES EAST

To work in partnership to safeguard a sustainable supply of water for the East of England, resilient to future challenges and enabling the area's communities, environment and economy to reach their full potential.

**THE WATER RESOURCES EAST MISSION**

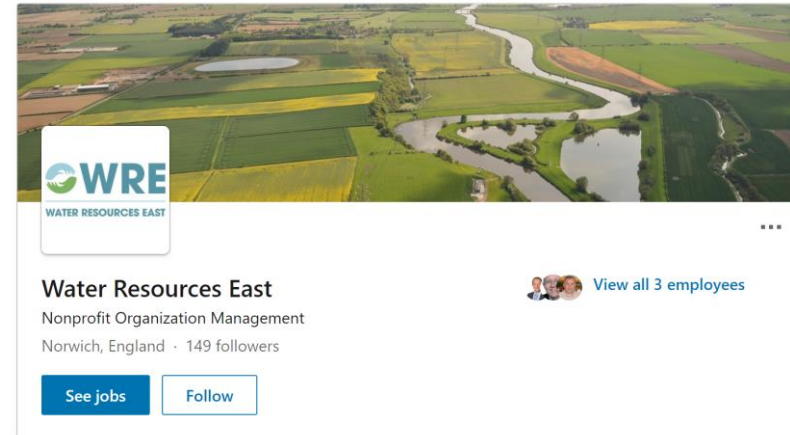


LinkedIn

Jobs ▾

Water Resources East

Location



**WRE**  
WATER RESOURCES EAST

**Water Resources East**  
Nonprofit Organization Management  
Norwich, England · 149 followers

[View all 3 employees](#)

[See jobs](#) [Follow](#)